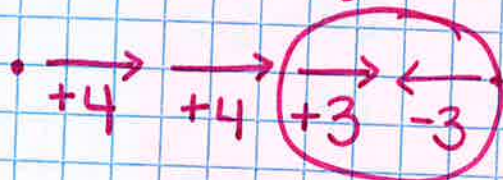
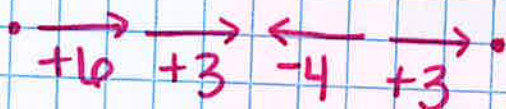


10/14/19

Lesson 2.2.2

I can explain the meaning of opposites and how they are useful in adding integers.

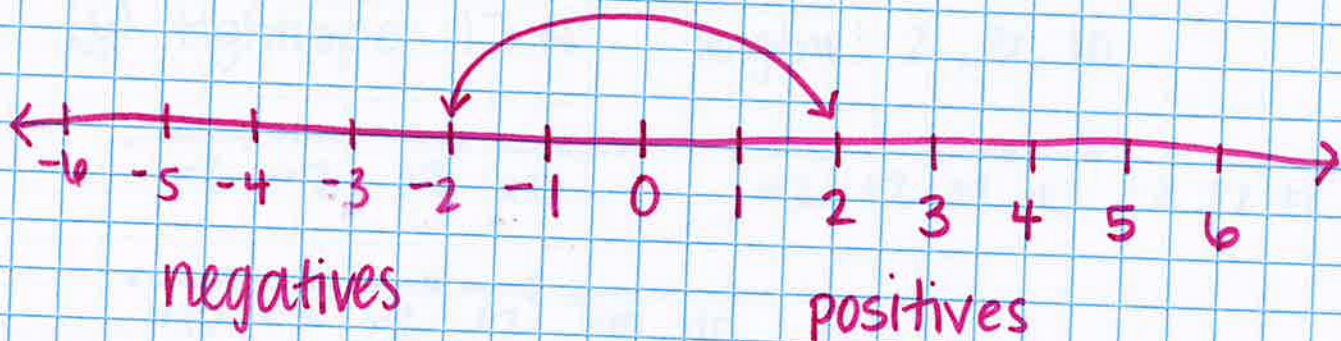
EX tightrope: 8 ft length: 3, 4, 6



This creates zero.
It cancels each other out.

OPPOSITES

+ (positive)
- (negative)



- same # but one is positive and one is negative
- same distance from zero

2-42

$$a) 8 + (-3) + 2 = 7 \text{ ft}$$

$$\begin{array}{c} \swarrow \quad \searrow \\ 5 \end{array}$$

$$b) 12.25 + 7.5 + (-1.75)$$

$$\begin{array}{c} \swarrow \quad \searrow \quad \downarrow \\ 19.75 - 1.75 = 18 \end{array}$$

finish

2-42 (you can use a calculator)

2-43

2-44

2-45