

2/9/19

Similar figures

an set up a proportion to solve for corresponding sides of similar figures.

to solve similar figures, we need to set up a proportion.

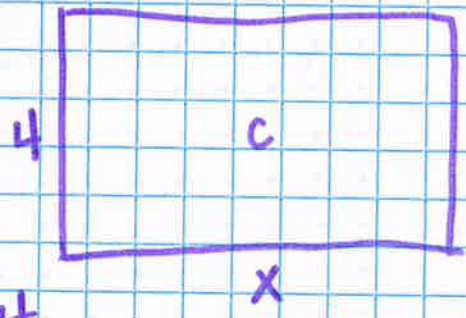
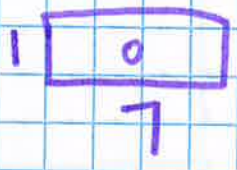
Proportion compare equivalent ratios and solve for an unknown value

EX

$$\frac{2}{3} = \frac{4}{x}$$

ratios equal unknown ratios

EX



$1 = 4$

$$\frac{1}{7} = \frac{4}{x}$$

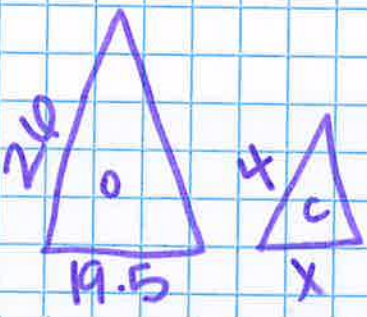
$\times 4$ (pointing to the denominator 7)

$\times 4$ (pointing to the numerator 4)

* corresponding sides line up

$x = 28$

EX



$$\frac{20}{19.5} = \frac{4}{x}$$

$\div 4.5$ (pointing to the denominator 19.5)

$\div 4.5$ (pointing to the numerator 4)

$x = 3$