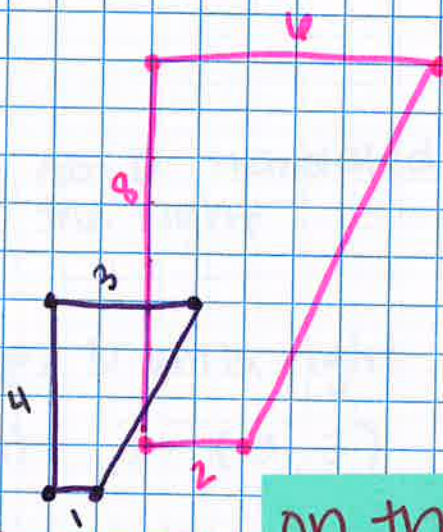


2/20/20

C3 6.2.1

can use multiplication to dilate a shape and describe how its size has changed.

4-42



$$(2,1) \times 2 = (4,2)$$

$$(3,1) \times 2 = (6,2)$$

$$(2,5) \times 2 = (4,10)$$

$$(5,5) \times 2 = (10,10)$$

on the same graph, apply each bullet point and then describe what happens

4-43 4-46

Dilation changes the size of the shape.

When multiplying by a number larger than 1, the shape increases in size.