

1/20/19

C3 5.2.1

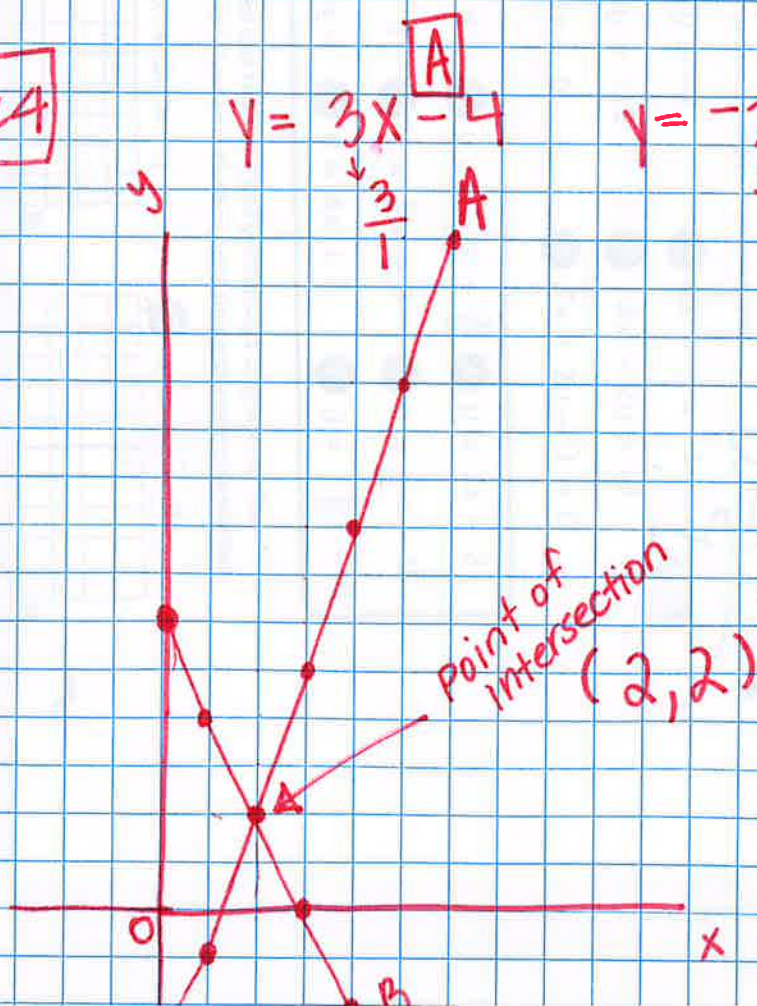
can examine a graph and create a justification for a point of intersection.

point of intersection: a point where two lines intersect or cross, share a common answer or are equal to each other

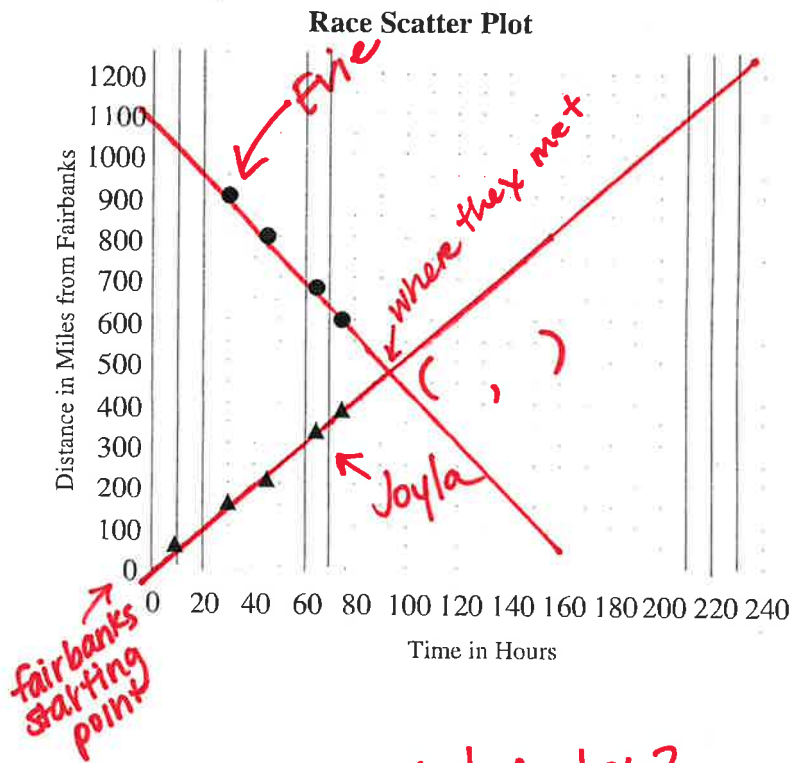
systems of equations: a set (2) of equations with the same variables.

We solve for one or more solutions to make the systems true.

5-24



If you were to plug 2 in for x into both equations, the outcome would be 2 for y in both equations



- ① Who traveled faster?
- ② How long is the race (miles) and how do you know?
- ③ Joyla will finish this race in approximately _____ hours.