

5/19

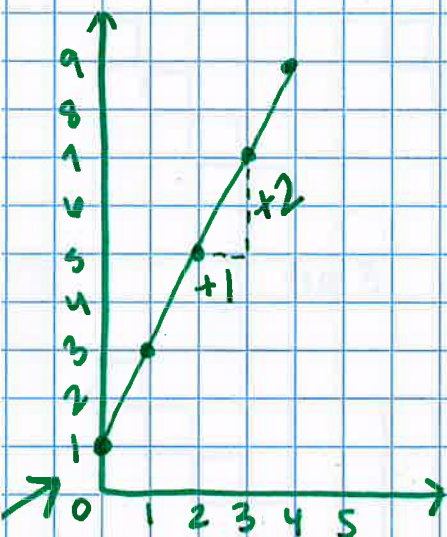
Lesson 4.1.6

explain how to write a rule given the graph of a line.

$$y = mx + b$$

↑
growth rate of change
slope

↑
 $x = 0$
starting value
y-intercept



$$\text{slope} = \frac{\text{rise}}{\text{run}} = \frac{\uparrow\downarrow}{\leftarrow\rightarrow} = \frac{2}{1} = 2$$

$$y = 2x + 1$$

intercept

4-54

- state the slope and y-intercept
- rule

4-55

- use the rule to draw the graph