

an determine which multiplier to use when scaling a quantity.

scale factor: a multiplier that increases or decreases a shape (or number).

**EX** copy machine:

$$25\% = \frac{1}{4}$$

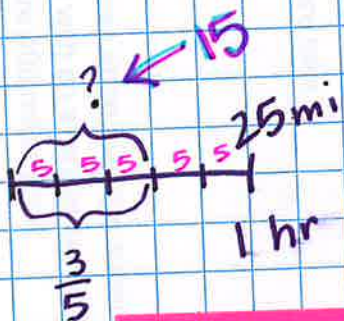
$$300\% = 3$$

$$100\% = 1 \rightarrow \text{original}$$

Less than 100%  $\rightarrow$  decrease

More than 100%  $\rightarrow$  increase

7-16



$$\frac{25}{1} \cdot \frac{3}{5} = \frac{75}{5} = 15$$

7-17

7-18

7-21

7-22